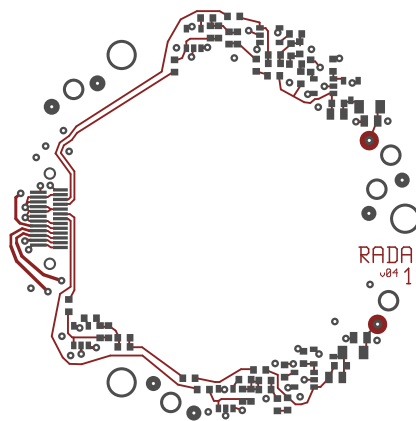
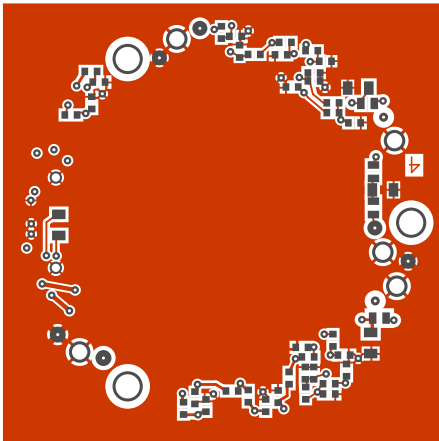


2. component
3. solder
4. Board
5. GND
6. power
7. clearance
8. componentmask
9. soldermask
10. plated-drill
11. topsilk
12. bottomsilk
13. bottompaste
14. toppaste
15. topassembly
16. bottomassembly
17. fab

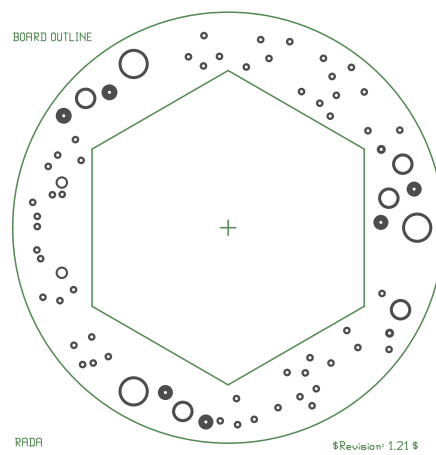
Layer component



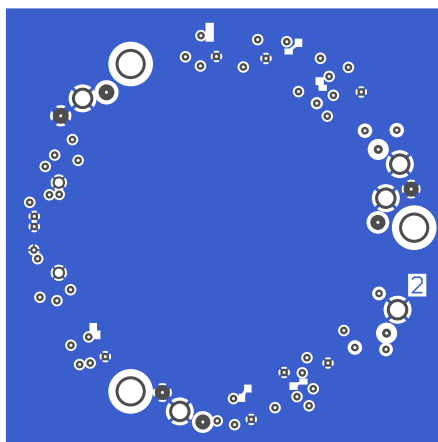


Layer solder

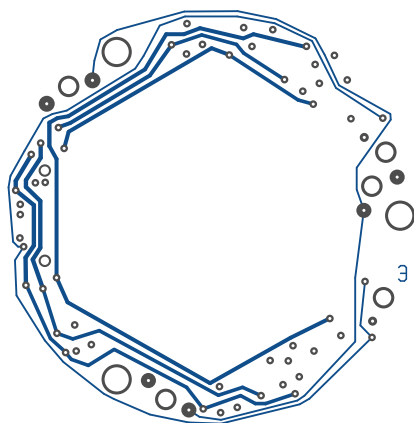
Layer Board



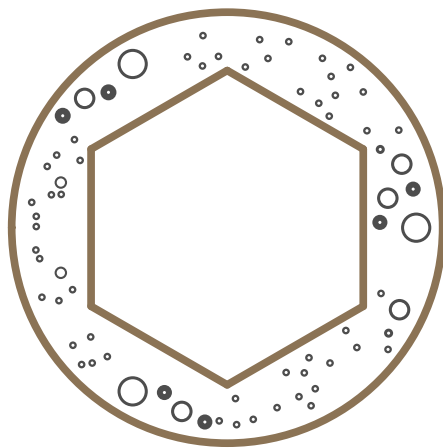
Layer GND



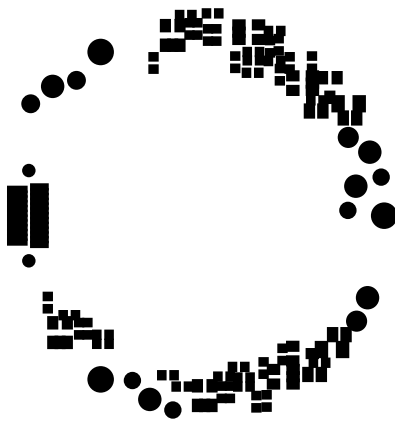
Layer power

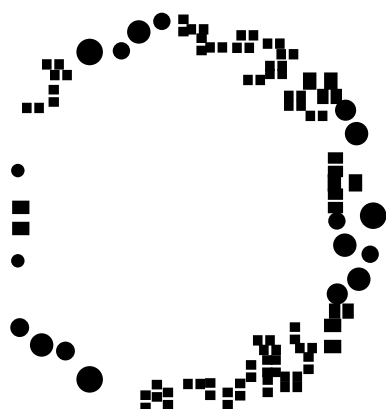


Layer clearance



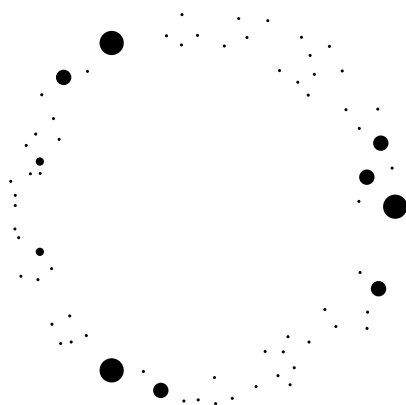
Layer componentmask



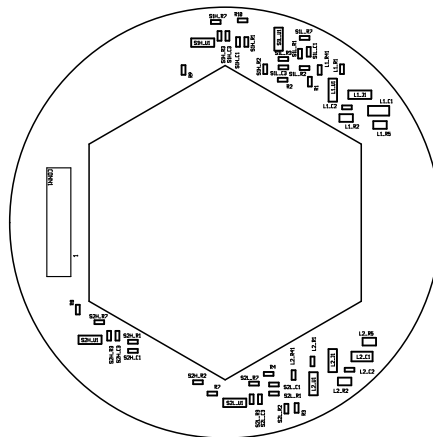


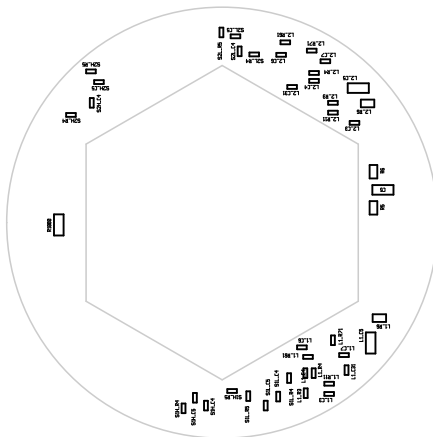
Layer soldermask

Layer plated-drill

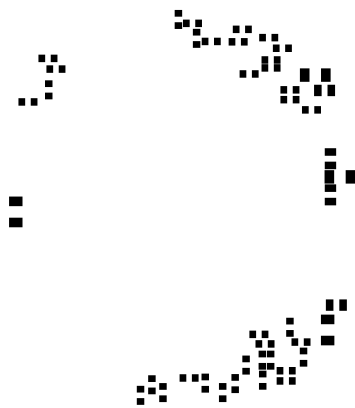


Layer topsilk





Γαλεις ποττωσιικ

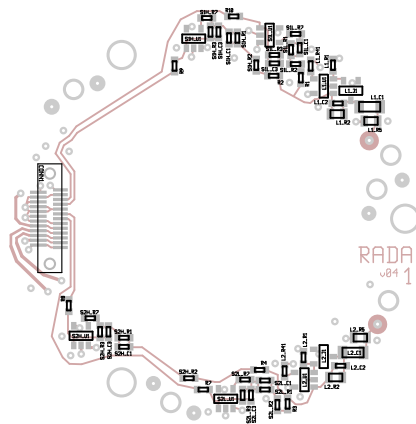


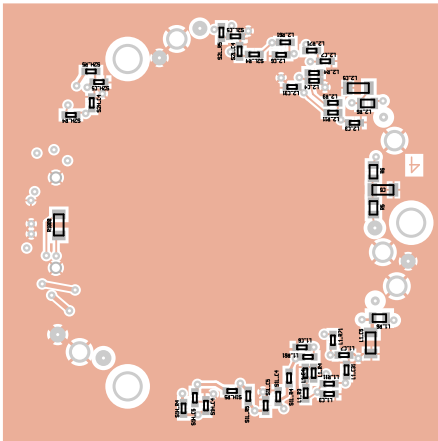
Γαλιε, ποττομπαστε

Layer toppaste



Layer topassembly

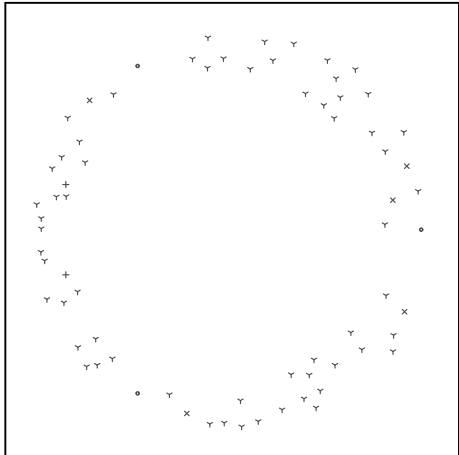




Layer bottomassembly

There are 4 different drill sizes used in this layout, 71 holes total

Symbol	Diam. (Inch)	Count	Plated?	
Y	<u>0.016</u>	<u>61</u>	<u>YES</u>	Title: RADA - Fabrication Drawing
+	<u>0.043</u>	<u>2</u>	<u>YES</u>	Author: Stephan Boettcher
x	<u>0.080</u>	<u>5</u>	<u>YES</u>	Date: Thu Sep 7 07:29:29 2006 UTC
•	<u>0.126</u>	<u>3</u>	<u>YES</u>	Maximum Dimensions: 2362 mils wide, 2362 mils high



Board outline is the centerline of this 10 mil rectangle - 0,0 to 2362,2362 mils